



SOMERVILLE

Solid infrastructure that **connects communities.**

Our Corporate Profile

Comprehensive and integrated range
of solutions that connect communities

April 2024



SOMERVILLE

Contents

Introduction	3
Pipeline	4
Infrastructure	7
Horizontal Directional Drilling	12
Our Commitment	14

Introduction

Robert B. Somerville Co. Limited has been providing the Pipeline and Utility Sector a fully comprehensive and integrated range of infrastructure services for over 70 years. Our Executive Management Team consists of individuals with extensive industry knowledge and technical experience that ensure our clients are provided excellent value through best-in-class services delivered by a competent workforce dedicated to quality and safety.

Somerville has developed a robust safety culture that includes support and active participation by all levels of management and employees throughout the organization. Our employees are provided training and ongoing development courses on a regular basis. This culture has positioned Somerville as an industry safety leader, consistently exceeding client, and industry requirements.

Complementing our commitment to Safety is the full integration of a Quality Management System that is fully compliant with ISO standards. Quality is at the core of all our service offerings and our process ensures a cycle of continuous improvement through auditing and implementation of corrective and preventative actions.

Somerville's services include Distribution and Mainline construction, maintenance and emergency services, pipeline integrity digs, facility construction, power transmission and utilities distribution installations, renewable energy construction, project planning and total turnkey services.

In addition, Somerville provides Horizontal Directional Drilling services through our dedicated HDD Division and currently maintains one of the largest fleets of directional drilling equipment in Canada.

As one of the founding members of the Pipeline Contractors Association of Canada and the Utility Contractors Association of Ontario, Somerville has access to one of the largest and most technically competent workforce pools in Canada. Our association with industry organizations and various trade unions ensures all projects are fully staffed with trained and competent workers.

Please review this booklet for descriptions of our services offering and project experience. Also please visit our web page, www.rbsomerville.com, to gain more information on our Management Team and detailed project experience.

We look forward to working collaboratively with all our clients to ensure all your projects are completed safely, efficiently and cost-effectively.

Somerville's oil and gas pipeline experience stretches back more than 70 years and includes projects across Canada, in the United States, United Kingdom, Africa, and the Caribbean.



01

Pipeline

Our Expertise



Pipeline

With this broad expertise, Somerville can provide a complete range of services for both mainline and distribution systems, including project planning, above and below-ground installation, pipe replacement, facilities design, and construction, maintenance support and emergency response services.

Maintenance

Our crews are trained for and experienced in completing a wide variety of maintenance services and tackling emergencies as they arise. Our crews perform maintenance services safely, reliably and cost-effectively, with minimal impact to the environment, property, and end users.

Our depth of experience, combined with our availability of personnel, equipment, and materials, ensures quick response times and efficient execution.

Somerville's Pipeline Maintenance includes the following services on all diameters of pipe:

- Dig Programs
- Clock Spring and Sleeve installs
- Above and below ground spray/brush/tape coating install (SPC, Denso, Kema)
- Geohazrd mitigations
- Pipe replacements
- Hydrotesting
- Live pipe lowering

Distribution

Somerville is committed to customer service, and we have successfully built our business and reputation from our strengths of constructing and maintaining natural gas distribution systems. Somerville can seamlessly assume end-to-end project responsibility of distribution projects predominantly involving:

- End-to-end services from planning to installation and energizing, purging and abandonment, and reclamation including hard surface replacement
- ½" to 30" Gas Distribution and Jet Fuel Lines in rural and urban locations
- Steel, PE, HDPE, FRP, Pre-Insulated and PVC pipe installs
- Pipe installation by any method: trench, plow, trenchless
- Gas Distribution capabilities include:
 - Meter Moves
 - PE squeezing and drilling and tapping
 - Steel, PE and PVC pipe replacement projects
 - Downstream of gas meter pipe installation



Main Line

Somerville provides several specialist capabilities for mainline construction, including:

- Medium to large diameter oil and gas pipelines travelling over large distances
- Very complex terrain
- Remote and urban locations
- Winter and summer conditions
- Mechanized and manual welding methods
- One large diameter pipeline spread and multiple medium diameter spread





02

Infrastructure

Our Expertise

Communications and Fibre Optics

There are many facets to the Communications and Fibre Optics sector, and Somerville has done it all. We started our communication work in the railway corridors of Ontario, installing fibre optic cable infrastructure along major portions of railway rights-of-way around the province, connecting other parts of the country with permanent communication systems. This work continues today as we relocate and install new fibre optic lines on our local rail networks and bridges. This work is being performed in the GTA as passenger rail operators are preparing the system for railway electrification.

Somerville also installs Fibre-To-The-Home (FTTH) services for our major communications providers. FTTH has been expanding for numerous years out of urban cities where we first started clearing routes and laying the main infrastructure. Now, many years later, we are heavily involved in the expansion of this infrastructure into urban communities where much needed internet upgrades are needed. We are proud to be part of this network building.



We also are a service contractor to major telecom providers in Canada. We have the experience to install and relocate infrastructure in urban and rural areas, including underground and overhead systems. Other services we offer include:

- Breakout and installation and lowering of communication manholes (Precast and Cast-In-Place)
- Breakout, relocation and lowering of concrete duct banks and direct buried ducts
- Removal and replacement of ducts located in bridges under rehabilitation
- Removal and disposal of ducts containing asbestos



Distribution Powerlines

Somerville builds infrastructure to distribute electricity to homes and businesses in many ways. We also hold service agreements with numerous Local Distribution Companies and private companies for:

- Urban and rural duct bank installation, servicing/expansion by open cut and a multitude of trenchless methods
- Manhole and cable chamber rehabilitation/placements (Precast and Cast-In-Place)
- Private service installation
- On-demand services like service burn-offs and power outages.
- Transformer and environmental remediation
- Duct proofing, mandrel and cable pulling

Mechanical & Electrical

We provide small systems, but in a big way. We understand that reliability is essential for mechanical and electrical systems that run in our municipal and transportation sectors and corridors. We have been providing these intricate systems for many years, and that's why our clients chose Somerville for their:

- Snow clearing devices on railway switches
- Above and below-grade natural gas infrastructure installations
- Back-up power systems (NG, Diesel) for both private and public facilities for fire & ambulance stations, bus terminals, pharmaceutical industry, etc.
- SCADA systems for municipal installations
- Temporary power for construction sites

Transmission Powerlines

Somerville provides a complete range of on-ground and underground systems that make up transmission systems. We install both new and replacement assets across Canada, delivering results in some of the most congested areas, and that's where we shine. Some of our offerings include:

- Urban and rural duct bank installation, servicing/expansion by open cut and a multitude of trenchless methods including HDD, Micro tunnel, and conventional boring
- Overhead to underground relocations in all areas, including major urban infrastructure crossings
- Manhole and cable chamber rehabilitation/placements
- Oil-Filled cable replacements

Substations

We spend a lot of time performing work in Substations. It's hard to find experienced civil contractors when oftentimes, stations are operating and cannot be taken out of service. That's why we are there. We provide a wide range of services on new and existing substations, such as:

- Access road development and rehabilitation
- Fencing and fence repair
- Ground grid placement
- Non-mechanical excavation for cable placement, inspections, replacements, and cable trough installation
- Insulating stone placement
- Transformer spill containment systems (concrete and Sorbweb, etc.)
- Transformer blast walls
- Equipment foundations (concrete, screw piles, etc.)



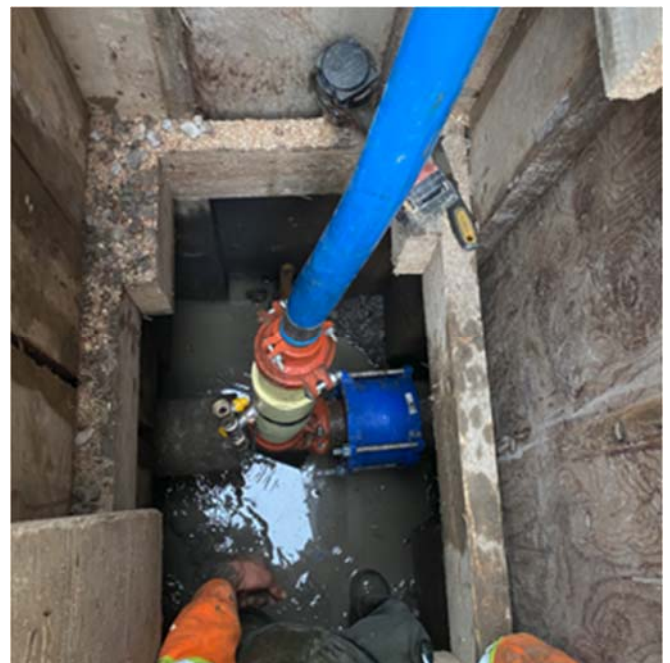
Water & Sewer

Somerville is proud to have built its reputation by providing expertise, professionalism, and innovative solutions for some of today's most complex linear infrastructure projects. Our commitment to safety, coupled with a vast array of knowledge will ensure that projects are always delivered safely, on time, and on budget.

We can offer comprehensive solutions for site developers, government agencies, municipalities, and industrial facilities for the following services

- Open cut installations of watermains, storm and sanitary pipes
- Private site servicing
- Cure-in-place pipe lining for watermains (CIPP)
 - Trenchless rehabilitation will extend the life of watermain pipes by a minimum 50 years
 - Sizes from 6" to 48"
 - Turn-key solution, including temporary water to clients
 - A great alternative compared to open cut replacement for reduced construction footprint and a more cost-efficient solution

- Temporary bypass for watermains
 - Full design, installation, and maintenance of temporary bypass pipe for watermains during construction
- HDPE pipe fusion and installation
- Emergency repairs
- District Energy Heating and Cooling
 - Welded steel pipes
 - HDPE
 - Fibreglass reinforced pipe



District Energy

Somerville has been constructing district energy projects for the past 15 years and has worked with some of Canada's largest district energy companies. We believe that district energy is a critical part of Canada's energy infrastructure, and we are continually looking for challenging projects to construct throughout Canada.

We offer the following district energy services:

- Open-cut installation
- HDD installation
- Welding
- Hot Tapping
- Joint kit installation
- Communication installation and verification
- Quality assurance
- Hydrotesting
- Somerville has installed many district energy manufacturing systems - i.e. Logstor, Isoplus, Brugg, Perma-Pipe, etc.

Some important district energy projects that Somerville has been involved with include Regent Park Energy Inc, Enwave, Markham District Energy, Sheridan College, York University, and Energy Services Modernization Project throughout downtown Ottawa.



Water & Wastewater Facilities

We understand the importance of keeping our municipal water and wastewater systems in operation, at all times. That's way we provide service to our much-needed systems that run in our communities. Such offerings for municipal works include:

- Odour control systems for wastewater plants
- Truck off-loading systems at wastewater plants
- Pump and chamber replacements on sanitary and storm pumping stations
- Civil, mechanical, structural, electrical upgrades at various municipal water and wastewater facilities
- Concrete restoration on water reservoirs, aeration tanks, wet and dry wells tank facilities
- SCADA installations and integrated valve replacements
- Back-up power systems (NG, Diesel)





03

Horizontal Directional Drilling

Our Expertise

Horizontal directional drilling

As leaders in the field, Somerville introduced the technology more than 30 years ago, acquiring its first directional drilling rig in 1989. After acquiring its first Directional Drilling Rig, the growth and experience gained over the last 30 years has created a large, diversified fleet. Somerville HDD has a wide range of capabilities with small rigs to a million-pound MAXI Rig capable of 2000+ meters in length and 60" hole opening.

Somerville's successful execution of projects across Canada proves its capability of performing trenchless installations across many sectors: water and sewer, telecom, oil, and gas. Somerville has a proven track record in performing trenchless installations in a wide range of conditions and locations, from remote sites to congested urban installations.

Trenchless installations require a solid foundation of top-tier equipment, manpower, and consistent ongoing improvements of technology, all which Somerville excels in. Somerville's heavy rig fleet includes:

- One (1) American Auger DD1100
- Three (3) American Augers DD440
- One (1) American Augers DD185
- One (1) American Augers DD220
- One (1) American Auger DD240
- Three (3) American Augers DD110

Somerville's light rigs Includes:

- Five (5) 5,000 lb. rigs
- One (1) 10,000 lb. rig
- Six (6) 20,00 lb. rigs
- Two (2) 30,000 lb. rigs

Horizontal Directional Drilling now extends into a tremendously large array of crossing applications:

- Under major roads and highway interchanges without interruption.
- Underwater bodies (rivers, lakes, and streams).
- Under rail line installations without service downtime.
- Glycol and jet fuel pipeline installation at active airports.
- Pipeline bundled with multi-use conduit under active runways.
- Retrofitting residential and commercial sprinkler systems.
- Upgrading power service to end users.
- Under protected forests and wetlands.

As leaders in the field, Somerville has experience coast to coast in the most remote locations to the busiest of inner-city, high-profile projects. Contact a member of our team for questions or to book an educational, informative lunch and learn for your team(s).



04

Our Commitment

Indigenous Relations, HSE & Our Quality



Indigenous relations

Somerville's commitment to creating sustainable economic and social development within Indigenous Nations and communities is demonstrated through our collaborative engagement.

We are a proud member of the Canadian Council for Aboriginal Business (CCAB) and has received the PAR Committed designation within the Progressive Aboriginal Relations Program.

Our collaboration with them focuses on providing:

- Procurement opportunities
- Employment opportunities
- Capacity building (apprenticeships, scholarships, mentorships)
- Innovative community development initiatives
- On-going and project-based MOUs & revenue sharing agreements



Health, safety & environment

Somerville has earned a reputation of being one of the safest construction companies in the industry.

Somerville is committed to the health and safety of our employees, contractors, clients, and the protection of the environment. Our safety culture is important to us and is promoted throughout the organization. As a responsible and conscientious employer, our ultimate goal is zero incidents.

To achieve this, we developed our “Target Zero” program which promotes a health and safety culture by urging employees to “stop and think” before they perform their regular work tasks. Extensive health and safety training combined with job specific technical education provides our employees with the proper skills to achieve this.

We strive not only to comply with stringent industry standards, but to exceed them. Our comprehensive health, safety and environmental program is recognized by ISNetworld, Avetta and Complyworks.



COMMITMENT TO QUALITY

Somerville works with clients and partners in many provinces and regions, each with their own particular set of regulations and requirements.

We work with clients and partners in many provinces and regions, each with their own particular set of regulations and requirements. We built that broad experience into our Quality Management System (QMS) and use it as our overall guiding process for all operations. As a forward-looking organization, we are driven to continually improve our business processes, achieved through the development of objectives and quality-related performance indicators, and the ongoing training and skills development of our workforce.

From our stringent project planning processes to our Quality Management System, Somerville is aligned with all industry best practices and the client requirements in all regions, including ISO 9000:2015, the international standard for Quality Management Systems Requirements.

Some key components of Somerville's QMS include:

- Procurement opportunities
- Employment opportunities
- Capacity building (apprenticeships, scholarships, mentorships)
- Innovative community development initiatives
- On-going and project-based MOUs & revenue sharing agreements
- Performance Monitoring and Evaluation systems



With Quality personnel having expertise in areas such as Quality, Auditing, Quality Engineering, Metallurgy, and NACE Coating Inspection Programs, we are able to provide clients with assurance that Quality needs are being met.



SOMERVILLE

Solid infrastructure that **connects communities.**

Eastern Head Office

13176 Dufferin Street
King City, ON Canada L7B 1K5
Phone: 905 833 3100

Western Head Office

28674 96 Avenue, Acheson
Alberta, Canada T7X 6J7
Phone: 587 461 1555

