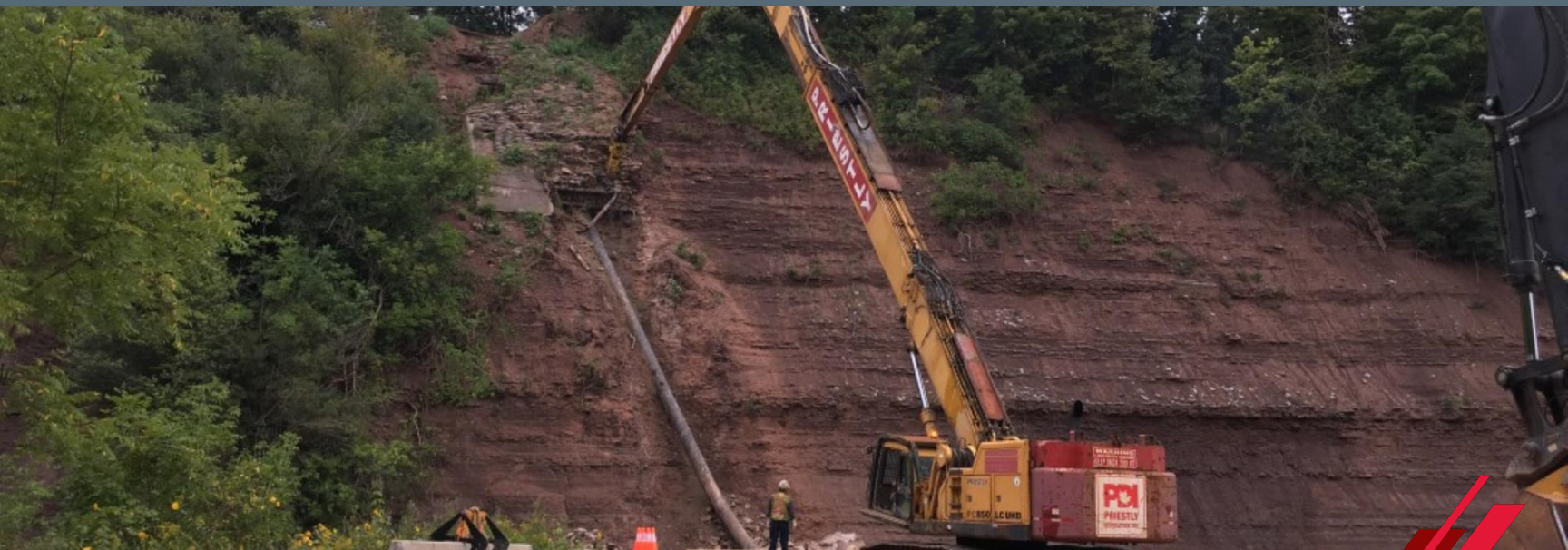


Enbridge - 16 Mile Creek, Oakville, Ontario

**PROJECT DESCRIPTION**

Due to severe bank instability and overburden collapse into 16 Mile Creek (a major tributary of Lake Ontario), an existing NPS 20 Enbridge pipeline was removed from the steep shale rock slope and from within the creek. It was capped on both the upstream and downstream ends. As this creek is a major spawning tributary for salmon and rainbow trout, water flow had to be maintained at all times. As a result the removal was done in segments, isolating the east and west sides of the river to maintain water flow. This project was extremely challenging as a safe way to remove the pipeline from a 100 vertical bank had to be developed with limited access to the hill base due to the close proximity to Glen Abbey Golf Course.

Client

Enbridge Pipelines

Job Number

18014

Work Type

Integrity & Maintenance

Location

Ontario

Role

Prime Contractor